



Virginia Healthcare Workforce Briefs

Indicators from the Bureau of Labor Statistics'
 Current Employment Statistics Survey
Series 1: State & National Employment

Series 1, Issue 82

January 2019

Inside this Brief:

Virginia HC&SA Employment	2
Virginia Employment	2
National Employment	3
State Employment Growth	3
About the Data	4

Data in the report are seasonally adjusted. Self-employed persons, including health professionals in private practice, are not included.

Highlights

- ◆ According to preliminary estimates, Virginia's Health Care & Social Assistance (HC&SA) sector enjoyed a strong month of employment growth in December with the creation of 1,700 new jobs across the state. This gain translates into a one-month annualized employment growth rate of 4.7%. With this gain, Virginia's HC&SA sector created 11,600 jobs in 2018.
- ◆ Despite the strong employment growth in Virginia's HC&SA sector in December, the state's total nonfarm payroll still fell by 100 during the month. This result represents the first time in 2018 in which Virginia's total nonfarm payroll has experienced a monthly decline.
- ◆ The national HC&SA sector added 55,500 new jobs in December, a gain that represents a 3.4% annualized growth rate. In addition, this result also represents the largest monthly employment gain in the national HC&SA sector in one-and-a-half years.
- ◆ The national HC&SA sector was responsible for one-quarter of all growth in the nation's total nonfarm payroll, which increased by 222,000 in December. In 2018, the nation's total nonfarm payroll increased by 2.67 million, which represents a 12-month growth rate of 1.8%.

Data in Brief

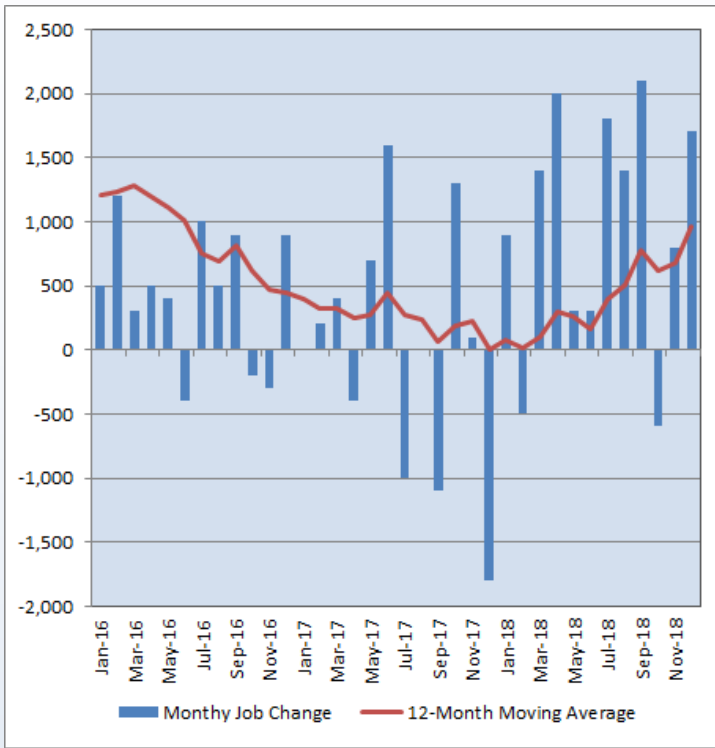
Seasonally Adjusted*	Employment, in Thousands				Growth Rate, Annualized		
	Dec. 2017	Sept. 2018	Nov. 2018	Dec. 2018	12 Month	3 Month	1 Month
Nonfarm, Total							
Virginia	3,954.1	4,025.0	4,031.2	<i>4,031.1</i>	1.9%	0.6%	0.0%
National	147,596.0	149,575.0	150,048.0	150,270.0	1.8%	1.9%	1.8%
Health Care & Social Assistance							
Virginia	433.6	443.3	443.5	<i>445.2</i>	2.7%	1.7%	4.7%
National	19,684.9	20,029.9	20,113.2	20,168.7	2.5%	2.8%	3.4%
All Other Nonfarm							
Virginia	3,520.5	3,581.7	3,587.7	<i>3,585.9</i>	1.9%	0.5%	-0.6%
National	127,911.1	129,545.1	129,934.8	130,101.3	1.7%	1.7%	1.5%

Preliminary estimates are italicized

*Seasonally adjusted data are adjusted by the Bureau of Labor Statistics to account for weather, holidays and other seasonal changes. Economists use seasonally adjusted data to reveal underlying trends over time. This series uses seasonally adjusted data exclusively. When comparing data in this series to other HWDC series, or publications from other sources, it is important to note whether the data reported have been seasonally adjusted.

Virginia HC&SA Employment

Figure 1: Monthly Change in Employment in Virginia’s Health Care & Social Assistance Sector, Seasonally Adjusted.



According to preliminary data released on Friday, January 18, 2019, by the U.S. Department of Labor, Bureau of Labor Statistics, Virginia’s Health Care & Social Assistance (HC&SA) sector enjoyed strong employment growth at the end of the year thanks to a gain of 1,700 new jobs in December. This increase represents a one-month annualized employment growth rate of 4.7%.

Despite the loss of 600 jobs in October, Virginia’s HC&SA sector has still increased employment by 7,200 since July. This accounts for nearly two-thirds of all HC&SA employment growth in the state during the year. In 2018, Virginia’s HC&SA sector created 11,600 new jobs across the state. This full-year gain represents the largest annual increase in statewide HC&SA employment since 2015. In that year, Virginia’s annual HC&SA employment gain totaled 17,900.

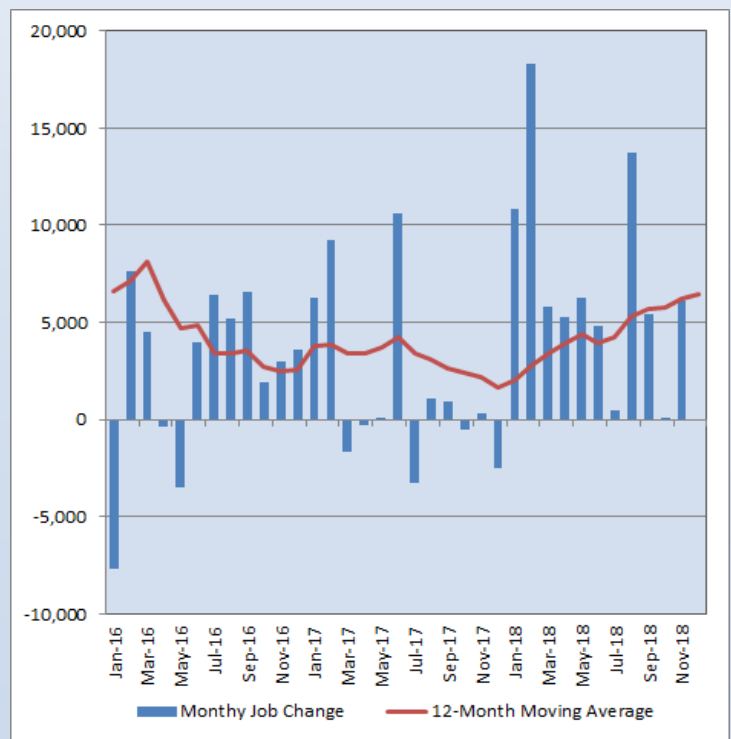
The continued strengthening of Virginia’s HC&SA employment situation can be observed in the upward trend of its 12-month moving average. Over the past year, this sector has created an average of 967 jobs per month, which represents its highest value in two-and-a-half years.

Virginia Employment

While Virginia’s HC&SA sector enjoyed strong employment growth in December, the same can not be said for the state’s total nonfarm payroll. For the first time in 2018, the state’s total nonfarm payroll experienced a monthly decline. In December, this amounted to a relatively modest decline of 100 in the state’s total nonfarm payroll. Regardless, this result further demonstrates the weak growth in Virginia’s total nonfarm payroll in Q4 2018. During the last three months of the year, the state’s total nonfarm payroll increased by only 6,000. This gain represents a three-month annualized growth rate of 0.6%. By way of comparison, Virginia’s total nonfarm payroll increased by 19,600 in Q3 2018.

Despite the short-term slowdown in growth in Virginia’s total nonfarm payroll, the long-term employment picture looks more impressive. In fact, the 12-month moving average of the change in Virginia’s total nonfarm payroll actually increased for the sixth consecutive month in December. With this increase, Virginia’s total nonfarm payroll has grown by an average of 6,417 jobs per month over the past year. This translates into a 1.9% annual growth rate.

Figure 2: Monthly Change in Employment in Virginia’s Total Non-farm Payroll, Seasonally Adjusted.

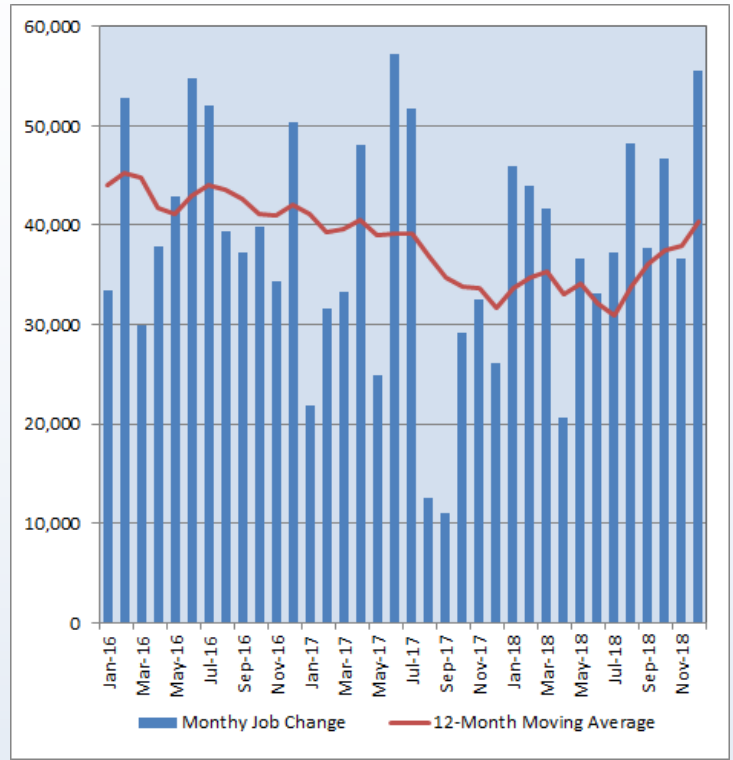


National Employment

Throughout most of 2018, the national HC&SA sector has been creating between 30,000 and 50,000 new jobs each month. However, the national HC&SA sector exceeded these bounds in December thanks to the creation of 55,500 new jobs during the month. This gain represents a one-month annualized employment growth rate of 3.4%. In addition, this also represents the largest monthly employment gain in the national HC&SA sector since June of 2017. With this strong monthly job gain, the national HC&SA sector experienced a significant improvement in its long-term employment picture. Over the past year, the national HC&SA sector has created an average of 40,317 jobs per month, thereby reaching its highest value since April of 2017.

The strong employment gain in the national HC&SA sector helped to fuel overall job growth across the country. In December, the nation’s total nonfarm payroll increased by 222,000. This gain translates into a one-month annualized growth rate of 1.8%. This is consistent with the long-term growth in the nation’s total nonfarm payroll. In 2018, the nation’s total nonfarm payroll increased by 2.67 million, which also represents a 1.8% growth rate.

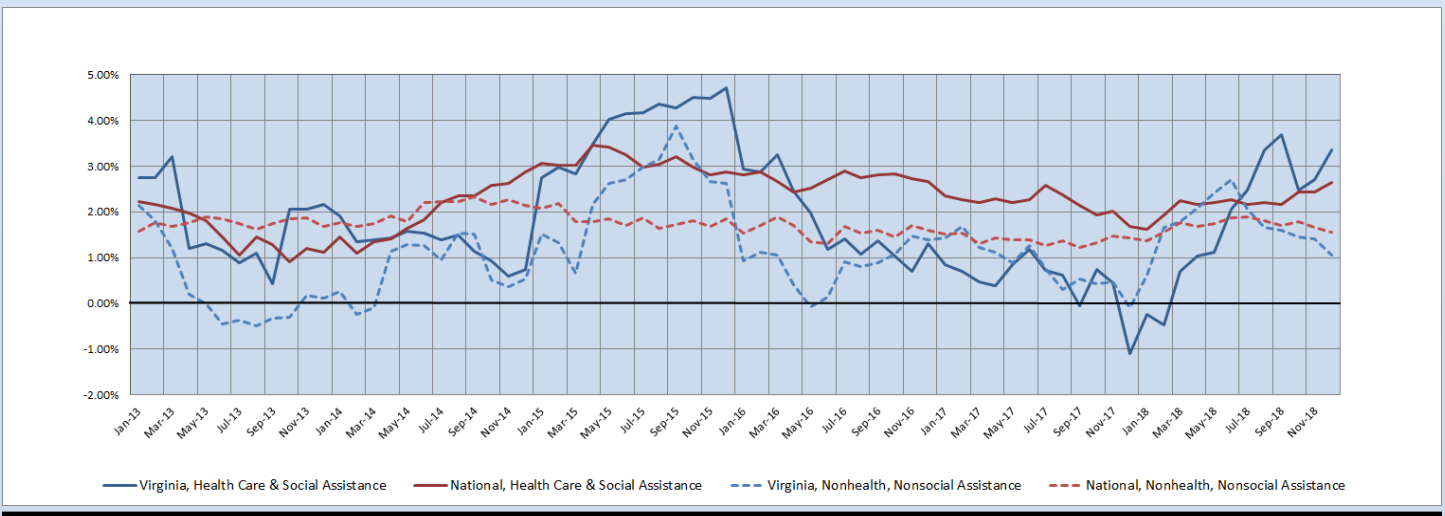
Figure 3: Monthly Change in Employment in National Health Care & Social Assistance Sector, Seasonally Adjusted



State Employment Growth

Virginia’s HC&SA sector experienced a large increase in its six-month employment growth rate moving average in December from 2.70% to 3.35%. With this gain, the six-month moving average of the employment growth rate in Virginia’s HC&SA sector has rebounded strongly from its sharp decline in October and is now quickly approaching the multi-year high of 3.68% that was reached back in September. On the other hand, the six-month month average of the growth rate in Virginia’s total nonfarm payroll fell from 1.41% to a nearly one-year low of 1.05% in December. The same thing also occurred with the nation’s total nonfarm payroll, which saw its own moving average fall from 1.66% to 1.56%. As for the national HC&SA sector, its six-month employment growth rate moving average reached a two-year high of 2.65%.

Figure 4: Six-Month Moving Average, Employment Growth, Seasonally Adjusted



**Healthcare Workforce
Data Center**

Perimeter Center
9960 Mayland Drive, Suite 300
Henrico, VA 23233-1463

Phone: (804) 367-2115
Fax: (804) 527-4434
E-mail: hwdc@dhp.virginia.gov

www.dhp.virginia.gov/hwdc/

HWDC Staff:

Elizabeth Carter, PhD <i>Executive Director</i>	Yetty Shobo, PhD <i>Deputy Director</i>
Laura Jackson, MSHSA <i>Operations Manager</i>	Christopher Coyle <i>Research Assistant</i>

Follow us on . . .

Tumblr: <http://vahwdc.tumblr.com/>

The Department of Health Professions Healthcare Workforce Data Center works to improve the data collection and measurement of Virginia's healthcare workforce through regular assessment of workforce supply and demand issues among the 80 professions and 350,000 practitioners licensed in Virginia by DHP.

The HWDC collects data on Virginia's licensed health professionals through surveys completed during the online license renewal and application process. Survey results and data may be accessed on our website: www.dhp.virginia.gov/hwdc/.

The HWDC also provides a series of Virginia Healthcare Workforce Briefs based on data collected by the US Department of Labor's Bureau of Labor Statistics and the US Department of Commerce' Bureau of Economic Analysis.

Virginia Healthcare Workforce Briefs:

Series 1: State & National Employment (Monthly)

Series 2: Virginia Regional Employment (Monthly)

Series 3: Income & Compensation (Quarterly)

About the Data

Data in this report are from the US Department of Labor, Bureau of Labor Statistics' Current Employment Statistics program. The CES program surveys about 143,000 businesses and government agencies monthly. Unless otherwise noted, this series uses seasonally-adjusted data that removes seasonal variations related to weather, holidays, weekends, seasons and other predictable variations. This allows us to better examine underlying trends in the labor market. Data from recent months are preliminary and subject to revision in future releases from the CES. Revisions will be reported in future editions of this series. Unless otherwise noted, the CES data presented in this series:

Includes:

- ◆ Data on employed individuals drawing a paycheck (payroll employees).
- ◆ All employees, regardless of role, occupation or hours worked.
- ◆ HC&SA employees in the private sector only.
- ◆ Persons employed by health professionals in private practice.
- ◆ Both government and private sector workers in nonfarm employment data.

Does not include:

- ◆ Self-employed workers or volunteers, including health professionals in private practice.
 - ◆ HC&SA employees in the public sector. (These are counted as government workers in monthly reports).
 - ◆ Information on hours worked or the quality of employment.
 - ◆ Government workers in HC&SA level data. (Government workers, regardless of occupation and role, are classified as public sector employees).
-